

CORRECTIONS ART EXHIBITION GUIDELINES

Thinking about putting together an exhibition of prison art? Preparing for an exhibition can come with a variety of challenges, but also great rewards.

Exhibitions are an opportunity to engage with the local community and acknowledge the hard work and talent that can produce a good piece of art. Exhibitions can also be a way to fundraise for appropriate and relevant charities.

Arts Access Aotearoa has a contract with the Department of Corrections to provide an arts advisory service. For more advice, support and information contact:

Arts in Corrections Advisor, Arts Access Aotearoa
Telephone: +64 4 802 4349
Website: www.artsaccess.org.nz

Gifting and exhibiting prisoner artwork

If a prisoner decides to donate their artwork the piece may be sold by an authorised organisation. Corrections Services requires a signed consent form to be completed before the donation can proceed. The prisoner will not receive any money but can be reimbursed for any material expenses should the work be commissioned. The proceeds of the sale will instead be retained by the authorised organisation for charitable purposes.

If artwork is exhibited and a potential for sale of the work arises the prisoner must agree to the sale. Refer to *F.12.Form.03 (Appendix A)* Flowchart for process. Corrections Services requires a signed consent form *F.12.Form.04 (Appendix B)* to be completed before any sale. The prisoner will not receive any money; it will be instead retained by the authorised organisation for charitable purposes.

Key considerations

- Discuss the exhibition idea with staff involved in the delivery of arts activities, such as art tutors, and programme coordinators and volunteers.
- Find out what else is going on in your area/prison. Are there other exhibitions happening? What have other staff done or plan to do?
- Decide if it will be an exhibition and/or a fundraiser.
- Once you have Prison Director approval, start working with participants and getting the consent forms completed.
- Consult with prisoners about the choice of charity and the theme of the exhibition, with the guidance of other staff involved.
- Form a committee of helpers and identify key roles to support the smooth running of the exhibition.
- Find a suitable venue:

If inside the prison, discuss with key staff about possible venues: for example, the visiting area or the front entrance of the facility.

If outside the prison, use your contacts in the community to suggest venues. An exhibition is an opportunity to build community relationships and engagement. Community galleries are a good starting place. Visit the

exhibition space so you know approximately how many pieces of art you will need to fill it.

- Plan the distribution of art supplies, and the collection and safe storage of artwork leading up to the exhibition.
- Explain clearly to artists that the artworks need to be anonymous and the content appropriate.
- Document the artwork by photographing each piece. Use the photographs to create a catalogue, and record the exhibition.
- Ensure that all information remains confidential and there are no copyright infringements.
- Engage other parts of the prison to help. For example, Employment teams may be able to assist with building frames or display panels; the print shop might be able to print posters and catalogues; the kitchens might be able to help to cater an event.
- The regional communications teams will provide guidance, in particular to advertise and market the event.
- The National Office communications team commdesk@corrections.govt.nz should be informed of all exhibitions when they are approved and should be actively involved if they are a national event or to be hosted at Parliament.
- Arts Access Aotearoa will be able to promote the exhibition.

Role of the prison director

The Prison Director may authorise a Non-Governmental Organisation (NGO), including Charitable Organisations, to exhibit or sell prisoner artwork.

The Prison Director may authorise a prisoner's artwork to be donated to or exhibited by an authorised organisation.

Not all prisoners are able to donate or display their artwork. The Prison Director must assess the benefits and potential consequences of a prisoner selling, displaying and/or exhibiting artwork. The final decision as to whether a prisoner can sell, display or exhibit artwork lies solely with the Prison Director.

The Prison Director will only allow artwork that does not contain objectionable material to be displayed. The Prison Director will make the final decision as to whether a piece of artwork contains objectionable material.

Appropriate content

All artists should use a pseudonym when they sign their artwork. This is essential if you intend to exhibit in a public space. Exhibiting in this context isn't about gaining recognition for the individual artist; it is about the skills and experience gained from participating in a positive event. It is important always to consider the rights of victims and the families of victims in a public setting.

Material is objectionable if it describes, depicts, expresses, or otherwise deals with matters such as sex, horror, crime, cruelty or violence, and the completed hobby/art item is likely to be injurious to the public good or the security of the prison. Objectionable items include:

- gang insignia, and gang-related material
- content that is degrading, dehumanising, or demeaning or depicts harm.

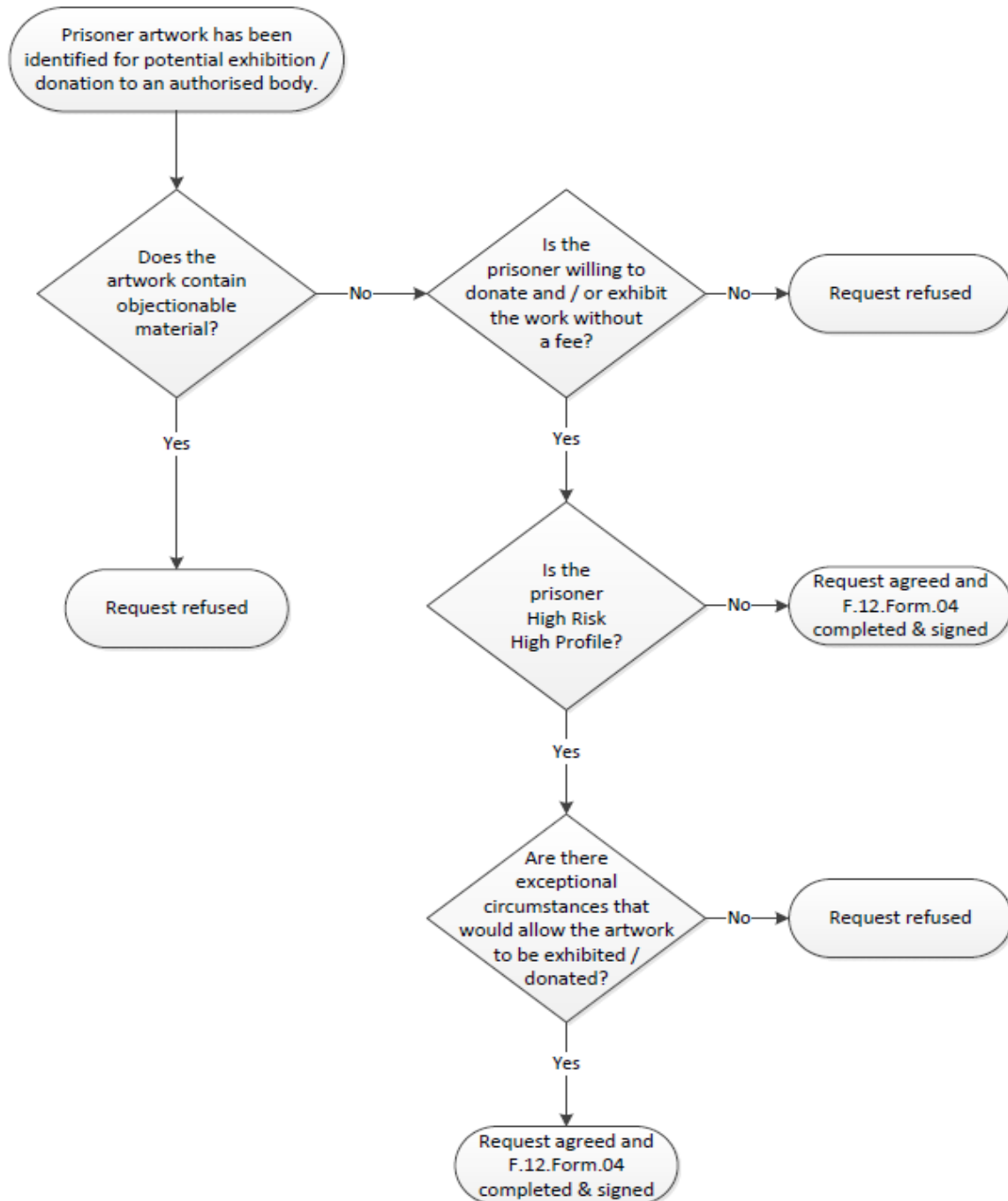
Consent forms

Ensure appropriate consent forms are filled in by each participant to ensure that the artwork can be collected, displayed and/or sold without issues. Prisoner consent forms need to clearly state what has been agreed to, for example:

- 100% of sales will go to charity
- the artwork may be withdrawn from the exhibition if it breaches the conditions outlined (for example gang references or signatures in the work).

Appendix A: Flow Diagram: Suitability of prisoner artwork for exhibition and or donation

F.12.Res.03 Suitability of prisoner artwork for exhibition and or donation flow diagram



Appendix B: F.12.Form.04 Authority for prisoner to gift / donate or exhibit artwork / hobby Item

Date: _____

Article Description

Prisoner's Name: _____

Signed: _____ Date: _____

(Select as appropriate) Sale Gift Exhibit

Sent to:

Name of organisation or person:

_____ City/ Town _____
_____ Street
_____ Suburb
_____ Postcode

Contact person: _____

If exhibiting only, at the end of the exhibition the item(s) will be:

Recommendation – Unit PCO

Yes No - If No state the reason:

Name: _____

Signed: _____ Tag: _____ Date: _____

Prison Director's decision

Yes No - If No state the reason:

Name: _____

Signed: _____ Tag: _____ Date: _____

Goods uplifted by:

Name: _____ Date: _____

Staff Witness

Signed: _____ Tag: _____ Date: _____

Place copies of form in prisoner's file.