



INNER WHEEL CLUB OF PLIMMERTON

October 2017



Greetings Ladies,

Leaving a Lasting Legacy

Start to stretch, turn your face to the early rays of the sun, yes it is spring.

Spring is a wonderful time of the year, it is getting warmer, the sense of longer days and a feeling that we can get up, get motivated, and with a quarter of our Inner Wheel year gone a reminder of our theme- "Leave a Lasting Legacy"

We are no different to the rest of the world's kingdom, new life with animals and birds (can you hear the tui's from your window), plants putting forth new buds, fruit trees blooming preparing to provide us with lovely summer fruits and of course in our gardens; the weeds outstripping our plants in growth!



Many of us have just returned from our winter sojourns, others coming out of "hibernation" and now October hitting us full on.

As a club we have so much going on this month, and before we know it, it will be Christmas preparations. I have tried to include all that is going on this month in our newsletter and of course am keen to know who will be attending "what".

Whether it be with family, friends or the wider community doing meaningful value adding activities for other people's lives is so rewarding. Our club is working with Rotary, with Zonta, with the Porirua City Council, with other Inner Wheel Clubs, with other service organisations and within our local community. Each of you creating a lasting legacy with your activities and actions.

Thank you.

In friendship

Christine



Ps: In putting my thoughts together for my brief words to you, I thought quite a bit about spring and its effect on people. I came across a couple of websites that have a little of the poetry of spring with the factual information.

[songbirds-emerge-for-spring](#)
[Season of new beginnings](#)

BRAS AND KNICKERS (update)

The Mana Zonta Ladies are still collecting Bras and Knickers for the Ladies of Arohata., so if you are rationalizing your wardrobe for spring, please keep this in mind.

Knickers do need to be new.



Please bring to our next meeting or drop them off to 31 Bosun Terrace, Whitby. We will have a display of these lovely

items at our meeting next week.. We have also been invited to present these to Zonta at their meeting on 6 November. Please let me know if you will be coming, and note: you will need to pay for your meal: \$25.00. Zonta meet at Plimmerton Boating Club, Moana Rd, Karehana Bay, Plimmerton.



INNER WHEEL CLUB OF PLIMMERTON

October 2017



WALKS AND TALKS

This Friday there will be 11 of us heading over the hill to our annual walk and talk with our sister South Wairarapa Inner Wheel Club. We will be meeting at the Papawai Marae in Greytown where there will be the normal marae protocols followed by a talk about the history of the marae. Lunch and then a chance to take in a few of the lovely shops in Greytown and hopefully the C'est Cheese in Featherston on the way home.

This year it will be our turn to host Kapiti Inner Wheel club. The intention is that we meet at the Forest & Bird Hut, and that Phillip Reidy will show us the video of Te Ara Piko Pathway.



Hopefully the weather will enable us to walk to our new seat on the pathway before having lunch at the old Forest & Bird cottage, then over the road where the rose buds should be showing through in the lovely Anglican Burial Ground up the hill.

The date is 20th of October. We need to provide morning tea and lunch, all hands on deck please!

Playable Porirua update

Planning is underway for the Research Impact conference in Dunedin where Adrienne has been invited to speak. The workshop Playable Porirua, is one of 6 designed to improve knowledge and skills on how to design, plan, manage, measure, communicate and optimise research impact. The focus of the conference is on biomedical and health sciences. The workshops will be opportunity

to hear examples and share experiences for establishing collaborations between stakeholders, researchers, community service and health providers and policy makers. This gives us an opportunity to highlight the work that Inner Wheel and Rotary are doing in the community.



Children in one of Whitby's playgrounds

DISTRICT MEETING

28th October – Churton Park School. So far 10 people have indicated they would like to come. If you are interested please speak with Christine.

**CanSurvive
Dragon Boat Team
8th Annual Golf Tournament**

SAVE THE DATE!

Friday, 17 November 2017

Judgeford Golf Club
328 Paremata Haywards Road, Judgeford
Porirua 5381

Register your interest:
csdbt1@gmail.com
Sonya Young 027 492 5365



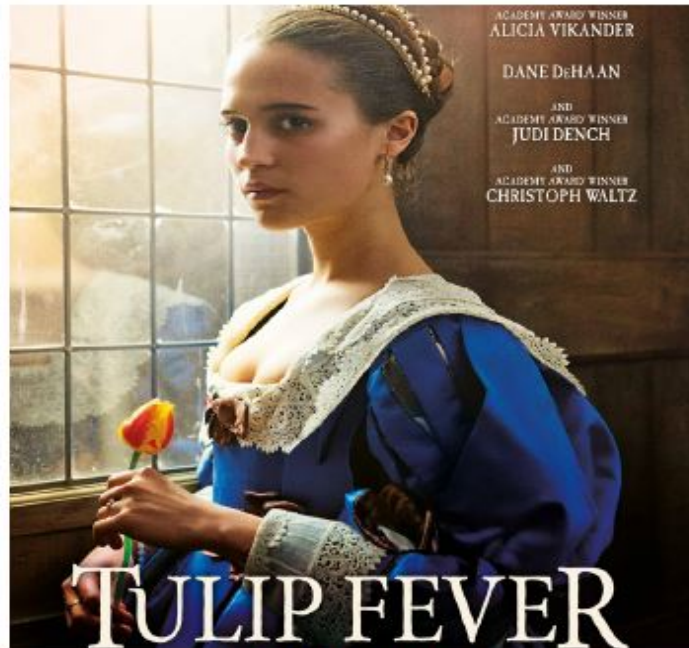
INNER WHEEL CLUB OF PLIMMERTON

October 2017



Movie Night

You are invited to a fundraising event
FEATURING A SCREENING OF



FILM YET TO BE RATED

LIGHT HOUSE PAUATAHANUI
3 PAEKAKARIKI HILL ROAD

THURSDAY 26TH OCTOBER AT 8.30 PM

ARRIVAL FROM 7.45PM | TICKETS \$25 INCLUDING PRE MOVIE DESSERT

FUNDRAISING FOR 3 YOUNG LADIES FROM AOTEA COLLEGE TO ATTEND A
WORLD DEBATING COMPETITION AT YALE UNIVERSITY, USA



Please talk with friends and family about coming to this family. The young ladies from Aotea College will be there for the evening so you can meet them.

Oxted:

The date of their sale is 28/29 November (the following weekend to that originally advised). Inner Wheel Wellington plan to meet at the Rowing Club/Seaview Cabaret carpark and walk over to the sale on Thursday 28th 10am



INNER WHEEL CLUB OF PLIMMERTON

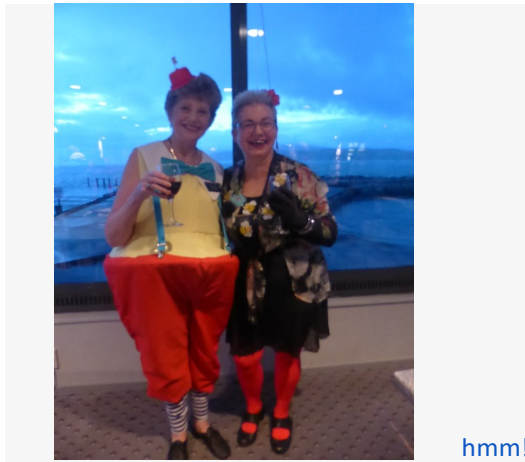
October 2017



A Big Night? some photo's

Our District Chair Judi Newborn visited us last month and talking enthusiastically about her theme the year is "Bee the exception to the Rule" and a saying she enjoys putting out there is "Red Tape is like Pink Elastic"

Let's just see what some of you greeted her like!



hmm!



I have nothing to say!!!!

A Christmas Concert



Thursday 7th & Friday 8th December
6.30PM (TBC), Arohata, Tawa
Tickets \$25.00

Bookings are now open! Seats are limited and will not be reserved without payment

Bookings You will be **inside "the wire"** therefore there are some "Corrections" rules to comply with. The following details are needed at time of payment: Full name, contact phone number and an email address for **every** person attending. Payment can be made by Direct Credit into the Zonta Account Bank Account: **03-0547-0071451-00** with the reference on the payment to include contact person and date required (Thursday 8th or Friday 9th). At the time of payment please email these above details to: zontamana@gmail.com

Inner Wheel and Rotary Combined Christmas Kiwiana Cocktail Party

The Spine: Pataka
From 7pm 1 December 2017
Wear your best "Kiwiana" – Prizes for best dressed Woman and Man

Next Week

Our guest speak is [Deb Stevens](#)

Information about her can be found [here](#)

Look forward to seeing you there
Please let us know you are coming, along with any guests that you want to bring.
And a reminder - if you tell us you are coming and then do not turn up you will still have to pay for your meal (\$25)

As Albert Einstein said:

"Insanity is doing the same thing over and over again and expecting different results."



INNER WHEEL CLUB OF PLIMMERTON

October 2017



Important Dates

- 17 October: Meeting Night
- 20 October: Host Kapiti Inner Wheel Ladies
- 28 October: District Meeting at Churton Park School
- 6 November: Invitation to present Bras and Knickers to Zonta
- 11 November: Table for Eight. Talk to Julia if you are not on her list
- 1 December: Combined Inner Wheel/Rotary Christmas Party
Pizza and Plonk - Wellington Anniversary Day 22/01/18

Interest Groups

Book Club: 2nd Monday of the Month. We give a talk each on books we have read in the past month, we don't all have to have read the same book. For more information contact Sheryl Perera's 233 9144

Tasty Tuesday: 1st Tuesday of the month. A group meet every month on the first Tuesday for a chat and a good laugh. They usually meet at the Whitby Co-op or Denny's. For more information contact Yvonne Groom Phone 04 2934461

Craft Morning: The first Thursday following book club, this may be the 2nd or 3rd Thursday depending on when the 1st Monday of the month is. It is held at Dianne Robert's home 4 Port Lane Whitby at 10am. Everyone takes along their own project and fun and is had by all. For more information contact Dianne Roberts Phone 237 8087

Mah-Jong: every Wednesday night 7-9pm at St Mary's Church in Whitby. Everyone welcome and they are willing to teach new members. For more information contact Margaret Pine Phone 2346471

Table for 8: The next dinner event is scheduled for 11 November. Further dates will be confirmed in the next newsletter. For those interested in either hosting or being a guest please contact Julia Mottram. A great night out. pandjmottram@orcon.net.nz

Inner Wheel International



Every club is invited to use the **Happier Futures Better Lives** logo as much as they can to showcase the good work members of IW are doing to help people across the globe.

Inner Wheel Web sites are:

- <http://plimmertonrotary.org.nz/Inner+Wheel>
- <http://www.innerwheel.org.nz>
- <http://www.internationalinnerwheel.org>

Facebook:

- Plimmerton Inner Wheel
- Inner Wheel New Zealand
- International Inner Wheel